

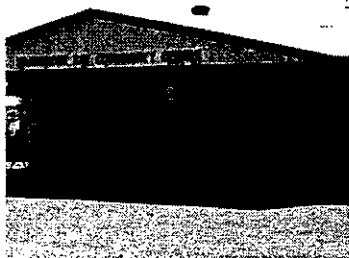
HARDWICKE BAY PROGRESS ASSOCIATION TIMES



This monthly newsletter is supported by local businesses including Foodland IGA, at 14 Warooka Road, Yorketown SA 5576. Tel: 8852 1111

If you wish to place an ad and reach the residents and visitors of Hardwicke Bay, or be on our mailing list please contact the Janet Firth at the Progress Association— progress@hardwickebay.org

Australia Day January 26th BBQ



What's On & When:

Monday's: 9:30 am
-Exercise 9:30 then Coffee & Chat at 10am

Wednesday's: 9:30 am
Exercise

Wednesday's: 7.30 pm
BINGO

Thursday's: 9:30 am to 3:30 pm
Craft & Scrapbooking

Friday's: 9:30 am
Exercise

-Drinks & Nibbles -BYO 5pm

Community Dinner—\$6 per head. please bring a savoury or desert. Bookings via the noticeboard. Everyone Welcome Next one 14th February 7pm

Opening Hours for Postal Service:

Monday 3:00 to 3:30pm

Tuesday & Thursday 2:10pm to 2:40pm

Wednesday & Friday 2:30pm to 3:00pm

Another great day for locals and visitors this Australia Day weekend with the annual gathering at the Hardwicke Bay bbq area. Ideal weather for enjoying the day at the beach and the playground. For some of us we feasted on the sausage sizzles, drinks and tasty contributions of little cakes and fresh fruit. A big thank you to those who gave their time and effort to ensure all went well, headed up by Lis and Jim Fiege. Country Times placed two photo's of Hardwicke Bay participants in their Australia Day write ups.....thanks Jenny Oldland.

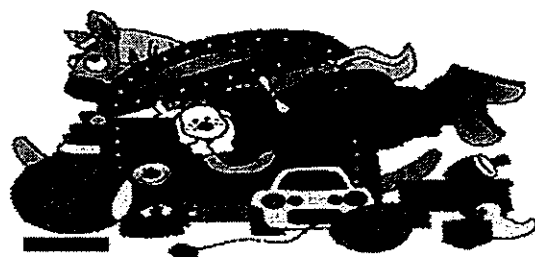
A few technical problems with the BBQ itself but thanks to Geoff Rattley the spare parts were fitted and good to go on the day. It was pleasing to catch up too with our neighbours who don't have the opportunity, yet, to enjoy our love Bay on a daily basis. This holiday weekend and the others throughout the year afford an opportunity to share our beautiful beaches and coastal areas. It was also great having our store open again and holiday makers and all enjoyed the varied take-a-away foods, coffees and ices whilst re-fueling vehicles and boats.

Roll on the Easter Weekend!

Donations for Trash & Treasure

Whilst we welcome donations of items for the Easter and October long weekend Trash & Treasure stall to support our key fundraising, we sadly have problems on occasions.

Frankly unsaleable items have been left at the Hall without contacting the Association. Some of these items need to be taken directly to the dump, at our expense, time and energy. This is disappointing and one suspects the 'donors' don't want to be known as they will be asked to remove the items.



We do not have an ongoing TV removal program. Last year was a 'one off' service supported by Yorke Peninsula Council. We will now have to pay to dump this TV, resulting in reduced funds towards improving our community.

Thank you to the considerate people who have donated 'good' items and called us to arrange for an Association member to open the shed. It also gives us an opportunity to kindly decline if we know the item is not likely to sell or advise we would need the donor to collect the item/s in the event of 'no sale'. We have little storage space.

Don't forget, you can also set up your own stall for a small fee. Call Pauline or Barbara Winter for details.

Progress Association News Items:

Notes from January Committee meeting

Membership letters sent out

If you haven't received your annual membership renewal letter please contact the Membership Secretary, Pam Winter, and she will ensure you receive a copy.

Street Lighting

Geoff Rattley has confirmed 9 streets in the township are in need of additional lighting. A number of complaints have been received and will be conveyed to Council.

Memorial Wall

Our plans have been forwarded to Council and may require submission of a development application. We are meeting with Council to discuss.

Boat Ramp and Slipway

We are meeting with Council to discuss improvements. To the boat ramp

and slipway access to the township.

Water System

The Committee are continuing their attempts to obtain documentation about the original decisions and agreements between the parties. I.e, Hardwicke Bay Progress Association Inc, and Yorke Peninsula Council.

If you have any new information to contribute please contact Janet Firth, President, so we can bring this matter to a conclusion. It is a contentious issue for some, a matter of principle, and financial, and for many, who have yet to respond, we can only encourage people to have a say, and then move on.

The next Committee meeting is to be held ^{10th} ~~11th~~ February 7am. All residents and active members welcome.

Cr John Rich

Along with other community organisations our request for Council representation at our Association meetings has resulted in the ap-



GETTING MARRIED

Jack, age 92, and Gill, age 89, are all excited about their decision to get married. They go for a stroll to discuss the wedding, and on the way they pass a chemist shop and Jack suggests they go in.

Jack addresses the man behind the counter:

"Are you the owner?" The pharmacist answers, "Yes."

Jack: "We're about to get married. Do you sell heart medication?"

Pharmacist: "Of course we do."

Jack: "How about medicine for circulation?"

Pharmacist: "All kinds"

Jack: "Medicine for rheumatism?"

Pharmacist: "Definitely."

Jack: "How about suppositories?"

Pharmacist: "Yes"

Jack: "Medicine for memory problems?"



Pharmacist: "Yes, a large variety. The works"

Jack: "What about vitamins, sleeping pills, anti-dotes for Parkinson's disease?"

Pharmacist: "Absolutely."

Jack: "Everything for heartburn and indigestion?"

Pharmacist: "We do..."

Jack: "You sell wheelchairs and walkers and canes?"

Pharmacist: "All speeds and sizes."

Jack: "Adult incontinence pants?"

Pharmacist: "Yes."

Jack: "Then we'd like to use this store for our wedding presents list..."

Janet Firth President	8853 4142 progress@hardwickebay.org
Matthew Winter Treasurer	8853 4101
Barbara Winter	8853 4382
Pauline McPherson	8853 4191
Barbara Caudle	8853 4264
Bev Mayhew	8853 4343
Lis Fiege	8853 4260
Geoff Rattley	8853 4292
Ron Kinnear	8853 4181 alarwood1@bigpond.com
Wayne Leaves	

One Liners:

We always hold hands. If I let go, she shops.

Don't marry for money, you can borrow it cheaper.

Love is holding hands in the street. Marriage is holding arguments in the street



Steven Griffiths MP JP

State Member for Goyder

For assistance with state issues

Maitland

51 Robert Street
MAITLAND SA 5573
PH: 8832 2455
Fax: 88322699

Parliament House

North Terrace
ADELAIDE SA 5000
Ph: 8237 9100

PASSING OF NEIGHBOURS—from Shirley and Phil Nash.

"Sadly Judith Ash and Ern Keppler both passed away in December. They had been next door neighbours and friends for many years. Ern enjoyed many a meal at her and her husbands house in the years since his wife Sue died.

Judith and her husband Brian holidayed here for quite a few years before making their holiday home a permanent one in 2004.

Judy, as she was known to most people, joined in many of the activities at the hall and enjoyed her years here, especially when her family came for holidays by the beach. The last few years she loved to take their little dog for walks and have a chat to people she met along the way.

Unfortunately she passed away very suddenly on December 18th while staying with her sister at Pt Noarlunga South.

Ern and his late wife Sue made their home here in 1983 and were responsible for the beautification of our many reserves.... Planting 100's of native trees which they watered by hand. These trees now act as wind breaks and shade for us to enjoy. Ern was a social gentleman who was always out and about. One of his pleasures was entering flowers and veggies in the Minlaton Show and he came away with many prizes. Scones were made and entered one year and much to his delight he won first prize.

Ern's health deteriorated over the last year to such an extent he had to reluctantly leave his home and move into Minlaton where he passed away on December the 28th at the age of 93. They will both be missed here at Hardwicke Bay".

Our condolences are extended to the Moore family with the passing of Phyllis Moore who generously supported the Hardwicke Bay residents by donating Lot 66 on which the Progress Association were able to build the community hall we now enjoy...a lasting memorial indeed.

R B

ELECTRONICS

WAROOKA ~ Open 9am to 2pm weekdays

TV, Radio, Marine, UHF Antennas & accessories
 GME Marine, UHF, 27Meg, AM/FM Radios etc.
 Leads for HDMI, iPod, A/V, computer, mobile phone
 LED lights, batteries, chargers, inverters, modern tech
 Electronic Repairs ~ many years of experience!
 Phone: 8854 5370 Mob: 0438 545 370
 Email: rbelectronics@internode.on.net
 Web: www.rbelectronics.ws

Winners of the Christmas Raffle

- 1st Prize: Christmas Hamper (Rosalie)
- 2nd Prize: Leg of Ham (Lis Fiege)
- 3rd Prize: Christmas Cake & Wine (Raelene Walters)



A big thank you to our doners:

- Barb Caudle—ham
- Lindsay + Rod Thomas—cherries
- Yummy Snack/Andy—assorted snack goods
- Thank you to all who supported us by selling tickets

YORKE'S MOBILE BRAKE REPAIRS



Servicing the Yorke Peninsula
 'we come to you'
 -On car disc & drum machining. We recommend and use Bendix & QFM pads. Dust free, low noise & long lasting.
 -Brake repairs on cars, vans and 4WD
 -Caravan and trailer brake repairs.
 -Boat trailer repairs.
 -All brake parts and acc supplier.
 -Welding repairs
 -All work guaranteed (conditions apply)

Parker's Kitchen

Delectable Home Made Treats

www.parkerskitchen.com.au

Phone: Karin : (08) 8853 4539

111 Esplanade Hardwicke Bay

FEBRUARY 2015 TIDE TIME FOR HARDWICKE BAY

(adjusted for daylight saving)

Sunday 1 2.49am : 1.35m 11.42am : 0.44m 4.17pm : 0.63m 7.33pm : 0.58m	Monday 2 3.20am ; 1.39m 11.21am ; 0.42m 4.03pm : 0.70m 8.37pm : 0.48m	Tuesday 3 3.46am : 1.41m 11.11am : 0.39m 4.16pm : 0.80m 9.17pm : 0.39m	Wednesday 4 4.10am : 1.43m 11.13am : 0.37m 4.33pm : 0.90m 9.52pm : 0.33m	Thursday 5 4.32am : 1.45m 11.20am : 0.35m 4.52pm : 1.00m 10.24pm : 0.30m
Friday 6 4.55am : 1.45m 11.30am : 0.35m 5.13pm : 1.08m 10.54pm 0.31m	Saturday 7 5.16am : 1.43m 11.42am : 0.36m 5.35pm : 1.14m 11.24pm : 0.37m	Sunday 8 5.37am : 1.37m 11.57am : 0.38m 5.59pm : 1.18m 11.54pm : 0.45m	Monday 9 5.57am : 1.29m 12.13pm : 0.40m 6.25pm : 1.19m	Tuesday 10 12.23am : 0.56m 6.13am : 1.18m 12.27pm : 0.41m 6.53pm : 1.17m
Wednesday 11 12.54am : 0.67m 6.20am : 1.06m 12.38pm : 0.41m 7.26pm : 1.12m	Thursday 12 1.29am : 0.77m 6.08am : 0.95m 12.43pm : 0.40m 8.13pm : 1.06m	Friday 13 2.47am : 0.86m 4.52am : 0.87m 12.39pm : 0.39m 11.09pm : 1.01m	Saturday 14 12.14pm : 0.37m	Sunday 15 1.45am : 1.09m 11.28am : 0.33m
Monday 16 2.30am : 1.20m 11.09am : 0.25m 4.48pm : 0.61m 8.06pm : 0.53m	Tuesday 17 3.08am : 1.30m 11.11am : 0.19m 4.32pm : 0.67m 9.00pm : 0.42m	Wednesday 18 3.43am : 1.39m 11.19am : 0.17m 4.40pm : 0.76m 9.41pm : 0.34m	Thursday 19 4.14am : 1.43m 11.27am : 0.20m 4.54pm : 0.86m 10.15pm : 0.30m	Friday 20 4.43am : 1.43m 11.31am : 0.26m 5.11pm : 0.97m 10.47pm : 0.30m
Saturday 21 5.06am : 1.38m 11.33am : 0.33m 5.28pm : 1.08m 11.15pm : 0.36m	Sunday 22 5.24am : 1.30m 11.33am : 0.37m 5.44pm : 1.19m 11.41pm : 0.46m	Monday 23 5.35am : 1.21m 11.35am : 0.36m 6.01pm : 1.28m	Tuesday 24 12.06am : 0.59m 5.40am : 1.14m 11.41am : 0.34m 6.24pm : 1.33m	Wednesday 25 12.30am : 0.74m 5.41am : 1.08m 11.54am : 0.32m 6.53pm : 1.31m
Thursday 26 12.56am : 0.89m 5.31am : 1.03m 12.10pm : 0.33m 7.31pm : 1.24m	Friday 27 12.22pm : 0.38m 8.56pm : 1.14m	Saturday 28 12.39am : 1.13m 1.47am : 1.13m 12.17pm : 0.45m		

Must Love Dogs

Boarding Kennels

Bianca Brook

0438392036

bianca.brook@bigponnd.com

Sandilands via Ardrossan

Cost \$15 per night, supply own food,

and must have current C5 vaccination.

Inspections welcome. Open 365 days/ year.



INLAND SEA

Seafood Restaurant

Southern Yorke Peninsula's finest seafood dining experience of locally sourced produce.

Brand new function room now open

Phone 88545499 for bookings.



RUM electrical
 ELECTRICAL CONTRACTORS

- ⇒ Domestic
- ⇒ Commercial
- ⇒ Rural

For Quality Work and Reliable Service

FJ & SA GUNN

Mobile mechanic

BAY SERVICES

Mechanical repairs

Hardwicke Bay

Services

Batteries and tyres

Welding

All types of vehicles

Mob: 0409 675 676

A/H: 8853 4263



JARRETTS HARDWARE

THE HANDYMAN'S STORE FOR
 HARDWARE • PAINTS • BUILDING
 PLUMBING AND GARDENING SUPPLIES

28 Fourth Street Ph: (08) 8853 2087
 MINLATON Fax: (08) 8853 2372